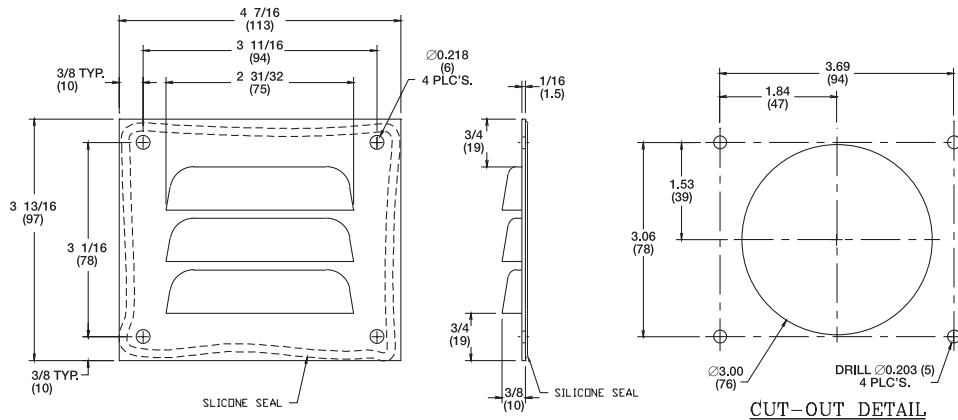


## Louver Plate Vent



### Louver Plate Vent

#### CATALOG NUMBER

LP1

LPK3KIT

Note: Kit includes LP1 plus silicone pack and four rivets



## Drain & Vent



### Drain & Vent

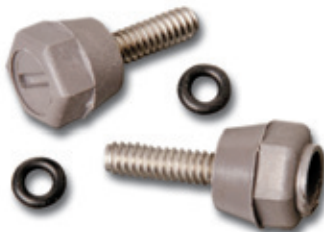
#### CATALOG NUMBER

DV1PVC

DVK3KIT

Note: Kit includes DV1PVC and silicone packet

## Encapsulated Screws



### Encapsulated

#### CATALOG NUMBER

2PKENCAP

4PKENCAP

## Stainless Steel Screws



### Stainless Steel Cover Screws

CATALOG NUMBER	SERIES	TYPE
2PKSS*	J	Cover
4PKSS*	J	Cover
4PKSSCF*	CF	Cover
2PKSSCL*	CL	Cover
4PKBPSS**	DS, J, CL	Back Panel
4PKBPN1610**	N	Back Panel
4PKBPN**	N	Back Panel
6PKBPN**	N	Back Panel
8PKBPN**	N	Back Panel

Note: \* includes cover screws and "O" rings.

\*\* includes back panel screws and washers.

## General Accessories

### Vapor Capsule



Stahlin Vapor Capsules contain a unique vapor phase inhibitor designed to protect metallic surfaces within an enclosure against airborne corrosion.

#### Louver Plate Vent

##### CATALOG NUMBER

VC21

Note: Radius of Protection: 2 ft.

Normal Life Span: 1 yr.

### Plastic Print Pocket



Stahlin's Print Pocket is self adhesive and can be utilized to store prints or other important documents within the enclosure.

#### Stainless Steel Cover Screws

CATALOG NUMBER	HEIGHT	WIDTH	DEPTH
PRTPKT	9.3"	10.4"	1.2"

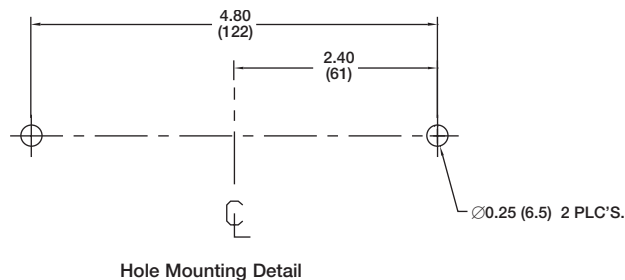
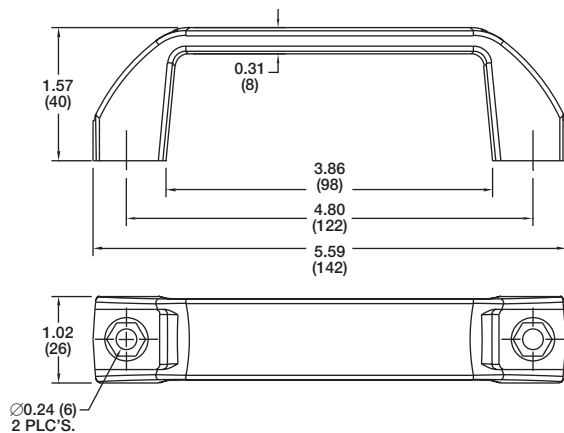
### Carrying Handle



#### Carrying Handle

##### CATALOG NUMBER

CH109506



## Nylon Cord Grip Fittings

Nylon cord grips are durable and easy to install. The body and sealing nut are manufactured with a tough, impact resistant nylon. Together the nut and washer form a positive sealing grip when installed through an enclosure wall. The oil resistant neoprene grommet and nylon washer fit tightly around an entrance cord, sealing out moisture, dust and foreign materials.

NEMA STD FBI-1983

UL STD 514 File No. 53599 Type 4

CSA STD 22.2 No. 18 File No. 28985 Type 4

HAZ LOC NEC 501-4(b), 502-4(a)(2), 503-3(a)

Class I, Div 2, Class II Div 1 and 2; Class III Div 1 and 2



### Nylon Cord Grip

CATALOG NUMBER	HUB DIAMETER	CABLE DIAMETER RANGE	INSIDE BODY DIAMETER
5122	1/2"	.250-.312	.625
5123	1/2"	.312-.375	.625
5124	1/2"	.375-.437	.625
5125	1/2"	.437-.500	.625
5126*	1/2"	.500-.562	.625
5146	3/4"	.562-.625	.788

\*Cable jacket may have to be stripped for clearance

### Nominal O.D.

SIZE	TYPE	2 COND	3 COND	4 COND
18	SV-SVT	.24	.25	.26
	SJ-SJO	.31	.34	.36
	S-SO	.39	.41	.44
	SJTO	.30	.33	.36
	STO	.38	.39	.42
16	SJ-SJO	.33	.36	.39
	S-SO	.41	.43	.49
	SJTO	.32	.35	.39
	STO	.39	.42	.47
14	SJO	.43	.47	
	S-SO	.53	.56	.61
	STO	.52	.55	.59
	BDC			.40
12	S-SO	.61	.64	.67
	STO	.59	.63	.67
	BDC			.45
10	S-SO	.64	.69	.75
	STO	.64	.68	.74
	BDC			.50
8	S-SO	.79	.90	.97
	STO	.81	.85	.96
	BDC			.68
6	S-SO	.91	.99	1.07
	STO	.95	1.00	
	BDC			.80
4	S-SO	1.09	1.15	1.29
	STO	1.10	1.15	1.30
	BDC			.94
2	STO	1.29	1.34	
	BDC			1.08

Dimensional data is taken from various cable manufacturers. It is not guaranteed but usable for general purposes.